



2024

Product Catalogue

Your IVD Partners



Company Profile



Dear customer and partner,

We, Medipan GmbH & GA Generic Assays GmbH (Germany), are leading companies in the development, manufacturing and marketing of IVD assays and instruments.

Together, we have an extensive experience in immunochemistry and biomedicine, especially in tissue and cell-based IFA, ELISA, RIA and LINE & Dot assays for the diagnosis of rheumatic and other autoimmune diseases of neurological, vascular, hepatic, renal or gastrointestinal origin.

As a growing company in the diagnostics market, we are looking for innovative research and distribution partners worldwide to strengthen our existing network of partners and customers.

With kind regards,

A handwritten signature in blue ink, appearing to read 'Dirk Roggenbuck'.

Prof. Dr. Dirk Roggenbuck

CEO of Medipan GmbH and GA Generic Assays GmbH

Table of Content

Company Profile.....	1
ELISA.....	6
Endocrinology.....	6
Gastroenterology.....	7
Hepatology.....	8
Nephrology.....	8
Rheumatology.....	8
<i>Anti-Phospholipid Syndrome</i>	8
<i>Connective Tissue Diseases</i>	9
<i>Rheumatoid and Juvenile Arthritis</i>	9
<i>Systemic Lupus Erythematosus</i>	9
<i>Vasculitis</i>	9
LINE & Dot.....	10
Automated assays for DotDiver2.0.....	10
Gastroenterology.....	10
Hepatology.....	10
Neurology.....	11
Rheumatology.....	11
<i>Anti-Phospholipid Syndrome</i>	11
<i>Connective Tissue Diseases</i>	11
<i>Vasculitis</i>	12
Manual Assays.....	13
Gastroenterology.....	13
Hepatology.....	13
Neurology.....	13
Rheumatology.....	14
<i>Anti-Phospholipid Syndrome</i>	14
<i>Connective Tissue Diseases</i>	14
<i>Vasculitis</i>	14
RIA.....	15
Endocrinology.....	15
IFA.....	17
Manual Assays.....	17
Dermatology.....	17
Gastroenterology.....	17

Hepatology.....	18
Neurology	18
Rheumatology.....	18
<i>Connective Tissue Diseases</i>	18
<i>Systemic Lupus Erythematosus</i>	19
<i>Vasculitis</i>	19
<i>Automated Assays</i>	20
Dermatology	20
Gastroenterology	20
Hepatology.....	21
Nephrology	21
Rheumatology.....	21
<i>Connective Tissue Diseases</i>	21
<i>Systemic Lupus Erythematosus</i>	22
<i>Vasculitis</i>	22
<i>Automated Assays</i>	23
<i>AKLIDES® Cell Damage</i>	23
<i>Rapid Tests</i>	24
<i>Lateral Flow</i>	24
Infectiology.....	24
Gastroenterology	24
<i>Latex Tests</i>	25
<i>IFA Platform Technology</i>	26
<i>Application – Immunology</i>	26
akiron® NEO	26
<i>Pipettor</i>	27
AP16 IF ELITE.....	27
<i>Application Cell Damage</i>	28
AKLIDES® Cell Damage	28
<i>Blot Automation</i>	29
DotDiver2.0.....	29
<i>Blot Scanning Software</i>	30
Blot GALaxy	30
<i>Index</i>	31



*All products are CE-marked,
unless otherwise stated.*

ELISA



Endocrinology

REF	PRODUCT	DESCRIPTION	DETERMINATIONS
3002	Medizym® anti-TPO	quantitative determination of IgG antibodies against thyroid peroxidase (TPO) in human serum [microtiter plate coated with recombinant human TPO]	96 (90 + C) 105 min / 100 µL of 1:100 dil.
3102	Medizym® anti-Tg	quantitative determination of IgG antibodies against thyroglobulin (Tg) in human serum [microtiter plate coated with highly purified human Tg]	96 (90 + C) 105 min / 100 µL of 1:100 dil.
3505	Medizym® T.R.A. human	quantitative determination of antibodies against TSH receptor in human serum [microtiter plate coated with TSH receptor (human)]	96 (90 + C) 180 min / 100 µL
3506	Medizym® anti-IA2 M	quantitative determination of antibodies against protein tyrosine phosphatase (IA2) in human serum [microtiter plate coated with IA2 (human recombinant)]	96 (90 + C) 160 min / 50 µL
3507	Medizym® anti-GAD M	quantitative determination of antibodies against glutamic acid decarboxylase (GAD65) in human serum [microtiter plate coated with GAD65 (human recombinant)]	96 (89 + C) 160 min / 50 µL
3806	Medizym® IAA	quantitative determination of IgG antibodies against insulin in human serum [microtiter plate coated with human recombinant insulin]	96 (89 + C) 105 min / 100 µL of 1:100 dil.

Gastroenterology

REF	PRODUCT	DESCRIPTION	DETERMINATIONS
3600	Anti-Intrinsic Factor	quantitative determination of IgG antibodies against intrinsic factor in human serum [microtiter plate coated with intrinsic factor]	96 (89 + C) 105 min / 100 µL of 1:100 dil.
3610	Anti-GPC	quantitative determination of IgG antibodies against gastric parietal cells in human serum [microtiter plate coated with H ⁺ /K ⁺ ATPase (α und β subunit)]	96 (89 + C) 105 min / 100 µL of 1:100 dil.
3710	GliaDea IgA	quantitative determination of IgA antibodies against deamidated gliadin in human serum [microtiter plate coated with deamidated gliadin]	96 (89 + C) 105 min / 100 µL of 1:100 dil.
3750	Anti-GP2 IgA	quantitative determination of IgA antibodies against glycoprotein 2 (GP2) in human serum [microtiter plate coated with GP2]	96 (89 + C) 105 min / 100 µL of 1:100 dil.
3810	GliaDea IgG	quantitative determination of IgG antibodies against deamidated gliadin in human serum [microtiter plate coated with deamidated gliadin]	96 (89 + C) 105 min / 100 µL of 1:100 dil.
3850	Anti-GP2 IgG	quantitative determination of IgG antibodies against glycoprotein 2 (GP2) in human serum [microtiter plate coated with GP2]	96 (89 + C) 105 min / 100 µL of 1:100 dil.
3950	Pancreatitis GP2	quantitative determination of glycoprotein 2 (GP2) in human serum [microtiter plate coated with anti-GP2]	96 (90 + C) 105 min / 100 µL
4006	ASCA IgA	quantitative determination of IgA antibodies against <i>Saccharomyces cerevisiae</i> mannan (ASCA) in human serum [microtiter plate coated with mannan of <i>Saccharomyces cerevisiae</i>]	96 (89 + C) 105 min / 100 µL of 1:100 dil.
4007	ASCA IgG	quantitative determination of IgG antibodies against <i>Saccharomyces cerevisiae</i> mannan (ASCA) in human serum [microtiter plate coated with mannan of <i>Saccharomyces cerevisiae</i>]	96 (89 + C) 105 min / 100 µL of 1:100 dil.
4033	Anti-huTransG	quantitative determination of IgA antibodies against tissue transglutaminase in human serum [microtiter plate coated with tissue transglutaminase and gliadin traces]	96 (89 + C) 105 min / 100 µL of 1:100 dil.
4044	Anti-hu tTG IgG	quantitative determination of IgG antibodies against tissue transglutaminase in human serum [microtiter plate coated with tissue transglutaminase and gliadin traces]	96 (89 + C) 105 min / 100 µL of 1:100 dil.
6012 6013	Helicobacter pylori Antigen	qualitative determination of <i>Helicobacter pylori</i> antigen in fecal samples [microtiter plate coated with anti- <i>Helicobacter pylori</i> antibodies]	48 (45 + C) / 96 (93 + C) 75 min / 50 µl of 1:20 dil.

Hepatology

REF	PRODUCT	DESCRIPTION	DETERMINATIONS
3900	Anti-ASGPR	semi-quantitative determination of IgG antibodies against asialoglycoprotein receptor (ASGPR) in human serum [microtiter plate coated with ASGPR]	96 (93 + C) 105 min / 100 µL of 1:100 dil.
4052	Anti-M2	quantitative determination of IgG antibodies against mitochondrial antigen M2 in human serum [microtiter plate coated with M2 antigen (PDC-E2, OGDC-E2, and BCOADC-E2)]	96 (89 + C) 105 min / 100 µL of 1:100 dil.
4053	Anti-LKM-1	quantitative determination of IgG antibodies against cytochrome p450 IID6 in human serum [microtiter plate coated with LKM-1 (cytochrome P450 IID6)]	96 (89 + C) 105 min / 100 µL of 1:100 dil.

Nephrology

REF	PRODUCT	DESCRIPTION	DETERMINATIONS
4067	Anti-Faktor H	quantitative determination of IgG antibodies against complement factor H in human serum [microtiter plate coated with complement factor H]	48 (41 + C) 105 min / 100 µL of 1:100 dil.

Rheumatology

Anti-Phospholipid Syndrome

REF	PRODUCT	DESCRIPTION	DETERMINATIONS
4014	Anti-Cardiolipin Screen	semi-quantitative determination of IgG, IgM and IgA antibodies (screening) against cardiolipin in human serum [microtiter plate coated with cardiolipin and β2-GP I]	96 (93 + C) 105 min / 100 µL of 1:100 dil.
4016	Anti-Cardiolipin	quantitative determination of IgG or IgM antibodies against cardiolipin in human serum [microtiter plate coated with cardiolipin and β2-GP I]	96 (89 + C) 105 min / 100 µL of 1:100 dil.
4036	Anti-β2-GP-I Screen	semi-quantitative determination of IgG, IgM and IgA antibodies (screening) against β2-glycoprotein I in human serum [microtiter plate coated with β2-GP I]	96 (93 + C) 105 min / 100 µL of 1:100 dil.
4041	Anti-β2-GP-I	quantitative determination of IgG or IgM antibodies against β2-glycoprotein I in human serum [microtiter plate coated with β2-GP I]	96 (89 + C) 105 min / 100 µL of 1:100 dil.
4050	Anti-Phospholipid screen	quantitative determination of IgG or IgM antibodies against phospholipids (cardiolipin, phosphatidyl-serine, -inositol, -ethanolamine, phosphatidic acid) in human serum [microtiter plate coated with β2-GP I, cardiolipin, phosphatidyl-serine, -inositol, -ethanolamine and phosphatidic acid]	96 (89 + C) 105 min / 100 µL of 1:100 dil.
4056	Anti-Phosphatidyl-serin	quantitative determination of IgG or IgM antibodies against phosphatidylserine in human serum [microtiter plate coated with phosphatidylserine and β2-GP I]	96 (89 + C) 105 min / 100 µL of 1:100 dil.

Connective Tissue Diseases

REF	PRODUCT	DESCRIPTION	DETERMINATIONS
4010	ANAscreen	semi-quantitative simultaneous determination of IgG antibodies against nuclear and cytoplasmic antigens in human serum [microtiter plate with HeLa cell nuclei and nuclear antigens]	96 (93 + C) 105 min / 100 µL of 1:100 dil.
4012	ANApr	semi-quantitative separate determination of IgG antibodies against nuclear and cytoplasmic antigens in human serum [microtiter plate coated with ds-DNA, RNP (68kDa, A, C), Sm, SS-A (60kDa), SS-B, Scl-70, CENP-B, Jo-1]	12 x 8 (10 + C) 105 min / 100 µL of 1:100 dil.
5032	ANAscreen quant	quantitative determination of IgG antibodies against nuclear and cytoplasmic antigens in human serum [microtiter plate with HeLa cell nuclei and nuclear antigens]	96 (90 + C) 105 min / 100 µL of 1:100 dil.

Rheumatoid and Juvenile Arthritis

REF	PRODUCT	DESCRIPTION	DETERMINATIONS
3665	Anti-CCP	quantitative determination of IgG antibodies against cyclic citrullinated peptides (CCP) in human serum [microtiter plate coated with CCP antigens]	96 (89 + C) 105 min / 100 µL of 1:100 dil.
4027	RF IgA	quantitative determination of IgA antibodies against Fc region of IgG (rheumatoid factor, RF) in human serum [microtiter plate coated with rabbit IgG]	96 (89 + C) 105 min / 100 µL of 1:100 dil.
4085	RF IgG	quantitative determination of IgG antibodies against Fc region of IgG (rheumatoid factor, RF) in human serum [microtiter plate coated with rabbit IgG]	96 (89 + C) 105 min / 100 µL of 1:100 dil.
4046	RF IgM	quantitative determination of IgM antibodies against Fc region of IgG (rheumatoid factor, RF) in human serum [microtiter plate coated with rabbit IgG]	96 (89 + C) 105 min / 100 µL of 1:100 dil.

Systemic Lupus Erythematosus

REF	PRODUCT	DESCRIPTION	DETERMINATIONS
4015	Anti-dsDNA	quantitative determination of IgG antibodies against double-stranded deoxyribonucleic acid (dsDNA) in human serum [microtiter plate coated with purified dsDNA]	96 (89 + C) 105 min / 100 µL of 1:100 dil.

Vasculitis

REF	PRODUCT	DESCRIPTION	DETERMINATIONS
4058	Anti-MPO	quantitative determination of IgG antibodies against myeloperoxidase (MPO) in human serum [microtiter plate coated myeloperoxidase (MPO)]	96 (89 + C) 105 min / 100 µL of 1:100 dil.
4259	Anti-PR3 hs	quantitative determination of IgG antibodies against proteinase 3 (PR3) in human serum [microtiter plate coated with proteinase 3 (PR3)]	96 (89 + C) 105 min / 100 µL of 1:100 dil.

LINE & Dot

Automated assays for DotDiver2.0



Gastroenterology

REF	PRODUCT	DESCRIPTION	DETERMINATIONS
5014	DotDiver CeliAK IgA	determination of IgA antibodies against deamidated gliadin and tissue transglutaminase in human serum [membrane coated with tissue transglutaminase and deamidated gliadin]	24 x 2 64 min / 10 µL DotDiver2.0
5015	DotDiver CeliAK IgG	determination of IgG antibodies against deamidated gliadin and tissue transglutaminase in human serum [membrane coated with tissue transglutaminase and deamidated gliadin]	24 x 2 64 min / 10 µL DotDiver2.0
5019	DotDiver BiermAK	determination of IgG antibodies against intrinsic factor and parietal cell antigen in human serum [membrane coated with intrinsic factor and H ⁺ /K ⁺ ATPase]	24 x 2 64 min / 10 µL DotDiver2.0

Hepatology

REF	PRODUCT	DESCRIPTION	DETERMINATIONS
5021	DotDiver HepAK 7 plus	determination of IgG antibodies against M2, LKM1, LC1, SLA, F-actin, gp210 and sp100 in human serum [membrane coated with above mentioned antigens]	24 x 7 64 min / 10 µL DotDiver2.0
5070	DotDiver HepAK 10	determination of IgG antibodies against M2/nPDC, M2/OGDC-E2, M2/BCOADC-E2, M2/PDC-E2, gp210, sp100, LKM1, LC1, SLA and F-actin in human serum [membrane coated with above mentioned antigens]	24 x 10 64 min / 10 µL DotDiver2.0

Neurology

REF	PRODUCT	DESCRIPTION	DETERMINATIONS
50301	DotDiver Anti- Gangliosid screen	determination of IgG/IgM antibodies against gangliosides in human serum [membrane coated with sulfatides, GM1, GM2, GM3, GM4, GD1a, GD1b, GD2, GD3, GT1a, GT1b, and GQ1b]	24 x 12 96 min / 10 µL DotDiver2.0
50381	DotDiver Anti- Gangliosid IgG	determination of IgG antibodies against gangliosides in human serum [membrane coated with sulfatides, GM1, GM2, GM3, GM4, GD1a, GD1b, GD2, GD3, GT1a, GT1b, and GQ1b]	24 x 12 96 min / 10 µL DotDiver2.0
50391	DotDiver Anti- Gangliosid IgM	determination of IgM antibodies against gangliosides in human serum [membrane coated with sulfatides, GM1, GM2, GM3, GM4, GD1a, GD1b, GD2, GD3, GT1a, GT1b, and GQ1b]	24 x 12 96 min / 10 µL DotDiver2.0


Rheumatology

Anti-Phospholipid Syndrome

REF	PRODUCT	DESCRIPTION	DETERMINATIONS
50401	DotDiver Anti- Phospholipid IgG	determination of IgG antibodies against phospholipids and serum proteins in human serum [membrane coated with cardiolipin, phosphatidic acid, phosphatidyl-ethanolamine, -glycerol, -inositol, -serine, annexin V, β2-GP I, prothrombin]	24 x 9 66 min / 30 µL DotDiver2.0
50411	DotDiver Anti- Phospholipid IgM	determination of IgM antibodies against phospholipids and serum proteins in human serum [membrane coated with cardiolipin, phosphatidic acid, phosphatidyl-ethanolamine, -glycerol, -inositol, -serine, annexin V, β2-GP I, prothrombin]	24 x 9 66 min / 30 µL DotDiver2.0

Connective Tissue Diseases

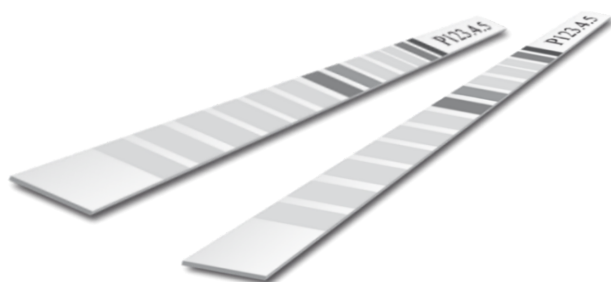
REF	PRODUCT	DESCRIPTION	DETERMINATIONS
5016	DotDiver ANA	determination of IgG antibodies against nuclear and cytoplasmic antigens in human serum [membrane coated with Sm, Sm/RNP, SS-A, SS-B, Jo-1, Scl-70, PM-Scl-100 and CENP-A/B]	24 x 8 64 min / 10 µL DotDiver2.0
5017	DotDiver PmScl	determination of IgG antibodies against nuclear and cytoplasmic antigens in human serum [membrane coated with Jo-1, PL-7, PL-12, SRP, PMScl, Ku, Mi-2, Scl-70]	24 x 8 64 min / 10 µL DotDiver2.0
5020	DotDiver Quantrix ANA	determination of IgG antibodies against nucleosome, dsDNA, histones, Sm, RNP (68kD/A/C), Sm/RNP, SSA/Ro 60kD, SSA/Ro 52kD, SSB, Scl-70, Ku, PM-Scl 100, Mi-2, Jo-1, PL-7, PL-12, SRP, ribosomes, CENP-A/B, PCNA, sp100, gp210, M2 recombinant, M2/nPDC and F-actin in human serum	24 x 25 64 min / 10 µL DotDiver2.0
5035	DotDiver ANA PCNA	determination of IgG antibodies against nuclear and cytoplasmic antigens in human serum [membrane coated with Sm, RNP, Sm/RNP, SS-A, SS-B, Jo-1, Scl-70, PM-Scl, Ku, CENP-A/B, PCNA and ribosome P0]	24 x 12 64 min / 10 µL DotDiver2.0

REF	PRODUCT	DESCRIPTION	DETERMINATIONS
5045	DotDiver PmScl 12	determination of IgG antibodies against nuclear and cytoplasmic antigens in human serum [membrane coated with Jo-1, PL-7, PL-12, EJ, SRP-54, Mi-2, MDA-5, TIF1- γ , Ku, PM-Scl 100, Scl-70 and SSA/Ro52]	24 x 12 64 min / 10 μ L DotDiver2.0
5066	DotDiver ANAcyto 10	determination of IgG antibodies against Jo-1, PL-7, PL-12, EJ, OJ, KS, ZO, HA, SRP and P0 in human serum [membrane coated with Jo-1, PL-7, PL-12, EJ, OJ, KS, ZO, HA, SRP, P0]	24 x 10 64 min / 10 μ L DotDiver2.0
5069	DotDiver Scleroderma 10	determination of IgG antibodies against Scl-70, CENP-A, CENP-B, PM/Scl-100, PM/Scl-75, Ku, RNA polymerase III, RNP (68kD/A/C), fibrillarin and Th/To in human serum	24 x 10 64 min / 10 μ L DotDiver2.0
5093	DotDiver Myositis 12	determination of IgG antibodies against Jo-1, PL-7, PL-12, EJ, SRP, Mi-2, MDA-5, TIF1- γ , SSA/Ro52kD, SAE1, SAE2 and NXP-2 in human serum [membrane coated with Jo-1, PL-7, PL-12, EJ, SRP, Mi-2, MDA-5, TIF1- γ , SSA/Ro52kD, SAE1, SAE2, NXP-2]	24 x 12 64 min / 10 μ L DotDiver2.0
 5291	DotDiver ANA 18	determination of IgG antibodies against nuclear and cytoplasmic antigens in human serum [membrane coated with dsDNA, Nucleosome, Sm, Sm/RNP, ribosomal P0, Histone, RNP (A, C, 68 kDa), SS-A/Ro60, SS-A/Ro52, SS-B, Scl-70, PM/Scl-100, CENP-A/B, PCNA, Jo-1, M2, DFS-70 and F-actin]	24 x 18 64 min / 10 μ L DotDiver2.0

Vasculitis

REF	PRODUCT	DESCRIPTION	DETERMINATIONS
5018	DotDiver ANCA	determination of IgG antibodies against myeloperoxidase (MPO), proteinase 3 (PR3) and glomerular basement membrane protein (GBM) in human serum [membrane coated with MPO, PR3 and GBM]	24 x 3 64 min / 10 μ L DotDiver2.0

Manual Assays



Gastroenterology

REF	PRODUCT	DESCRIPTION	DETERMINATIONS
4202	CeliAK IgG LINE	determination of IgG antibodies against deamidated gliadin and tissue transglutaminase in human serum [membrane coated with tissue transglutaminase, and deamidated gliadin]	20 x 2 75 min / 10 µL
4208	CeliAK IgA LINE	determination of IgA antibodies against deamidated gliadin and tissue transglutaminase in human serum [membrane coated with tissue transglutaminase, and deamidated gliadin]	20 x 2 75 min / 10 µL
4220	BiermAK LINE	determination of IgG antibodies against intrinsic factor and parietal cell antigen in human serum [membrane coated with intrinsic factor and H ⁺ /K ⁺ ATPase]	20 x 2 75 min / 20 µL

Hepatology

REF	PRODUCT	DESCRIPTION	DETERMINATIONS
4030	HepAK ^{plus} Dot	determination of IgG antibodies against M2, LKM1, LC1, SLA, and F-actin in human serum [membrane coated with M2, LKM1, LC1, SLA, and F-actin]	24 x 5 80 min / 10 µL
4099	HepAK 7 ^{plus} Dot	determination of IgG antibodies against M2, LKM1, LC1, SLA, F-actin, gp210 and sp100 in human serum [membrane coated with M2, LKM1, LC1, SLA, F-actin, gp210 and sp100]	24 x 7 80 min / 10 µL

Neurology

REF	PRODUCT	DESCRIPTION	DETERMINATIONS
5003	Anti-Gangliosid Dot	determination of IgG or IgM antibodies against gangliosides in human serum [membranes coated with GM1, GM2, GM3, GM4, GD1a, GD1b, GD2, GD3, GT1a, GT1b, GQ1b, sulfatides]	20 x 12 120 + 60 min (4°C) + 10 min (RT) / 10 µL

Rheumatology

Anti-Phospholipid Syndrome

REF	PRODUCT	DESCRIPTION	DETERMINATIONS
5012	Anti-Phospholipid 10 Dot	determination of IgG- or IgM antibodies against phospholipids and serum proteins in human serum [membrane coated with cardiolipin, phosphatidic acid, phosphatidyl-choline, -ethanolamine, -glycerol, -inositol, -serine, annexin V, β 2-GP I, prothrombin]	20 x 10 55 min / 30 μ L

Connective Tissue Diseases

REF	PRODUCT	DESCRIPTION	DETERMINATIONS
4049	PmScI ^{plus} Dot	determination of IgG antibodies against nuclear and cytoplasmic antigens in human serum [membrane coated with Jo-1, PL-7, PL-12, SRP, PMScl, Ku, Mi-2, Scl-70]	24 x 8 80 min / 10 μ L
4074	ANAscI ^{plus} Dot	determination of IgG antibodies against nuclear and cytoplasmic antigens in human serum [membrane coated with Sm, Sm/RNP, SS-A, SS-B, PMScl, Ku, Jo-1, CENP-A/B, PCNA, Scl-70]	24 x 10 80 min / 10 μ L
4289	ANA 12 LINE	determination of IgG antibodies against nuclear and cytoplasmic antigens in human serum [membrane coated with dsDNA, nucleosome, histones, Sm, SS-A/Ro 60, SS-A/Ro 52, SS-B, P0, RNP (68 kD, A, C), Jo-1, Scl-70, CENP-B]	20 x 12 75 min / 20 μ L
4291	ANA 18 LINE	determination of IgG antibodies against nuclear and cytoplasmic antigens in human serum [membrane coated with dsDNA, nucleosome, Sm, Sm/RNP, P0, histone, RNP (68 kD, A, C), SS-A/Ro60, SS-A/Ro 52, SS-B, Scl-70, PMScl, CENP-A/B, PCNA, Jo-1, M2, f-Actin, DFS-70]	20 x 18 75 min / 10 μ L

Vasculitis

REF	PRODUCT	DESCRIPTION	DETERMINATIONS
4028	ANCA Dot	determination of IgG antibodies against Myeloperoxidase (MPO), Proteinase 3 (PR3) and Glomerular Basement Membrane protein (GBM) in human serum [membrane coated with MPO, PR3 and GBM]	24 x 3 80 min / 10 μ L

RIA



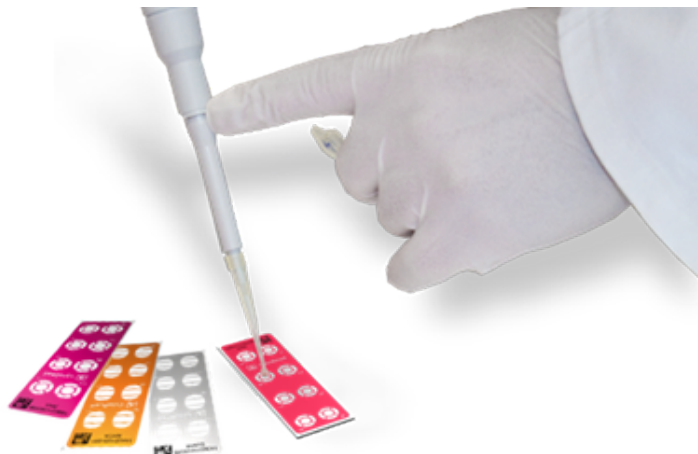
Endocrinology

REF	PRODUCT	DESCRIPTION	DETERMINATIONS
1301	SELco® Tg 1 step	quantitative determination of thyroglobulin (Tg) in human serum [biotinylated and 125-iodine-anti-hTg]	100 (92 + C) Overnight / 100 µL
1450	SELco® TSH rapid	quantitative determination of thyrotropin (TSH) in human serum [biotinylated and 125-iodine-anti-hTSH]	100 (91 + C) 30 min / 100 µL
1630	SELco® Calcitonin	quantitative determination of calcitonin (hCT) in human serum [biotinylated and 125-iodine-anti-hCT]	100 (92 + C) 18-24h / 100 µL
1652	SELco® FT3	quantitative determination of free triiodothyronine (FT3) in human serum [tubes coated with T3 protein / tracer (125-iodine-anti-T3)]	100 (92 + C) 60 min / 100 µL
1881	SELco® FT4	quantitative determination of free thyroxine (FT4) in human serum [tubes coated with T4 protein / tracer (125-iodine-anti-T4)]	100 (92 + C) 60 min / 50 µL
2035	CentAK® IAA M	quantitative determination of antibodies against insulin (IAA) in human serum [125-iodine-insulin (human) / protein A]	100 (93 + C) Overnight + 60 min / 20 µL
2042	SELco® TRAb human 1 step	quantitative determination of TSH receptor antibodies (TRAb) in human serum [tubes coated with TSH receptor (human) / tracer (125-iodine-aTSHR)]	100 (94 + C) 120 min / 100 µL

REF	PRODUCT	DESCRIPTION	DETERMINATIONS
2050	CentAK® anti-IA2 M	quantitative determination of antibodies against protein tyrosine phosphatase IA2 (IA2 Ab) in human serum [125-iodine-IA2 (human, recombinant) / protein A]	50 (43 + C) Overnight + 60 min / 20 µL
2150	CentAK® anti-IA2 M	quantitative determination of antibodies against protein tyrosine phosphatase IA2 (IA2 Ab) in human serum [125-iodine-IA2 (human, recombinant) / protein A]	100 (93 + C) Overnight + 60 min / 20 µL
2070	CentAK® anti-GAD ₆₅ M	quantitative determination of antibodies against glutamic acid decarboxylase (GAD65 Ab) in human serum [125-iodine-GAD65 (human, recombinant) / protein A]	100 (42 + C) 180 min / 20 µL
2071	CentAK® anti-GAD ₆₅ M	quantitative determination of antibodies against glutamic acid decarboxylase (GAD65 Ab) in human serum [125-iodine-GAD65 (human, recombinant) / protein A]	50 (92 + C) 180 min / 20 µL
2080	SELco® anti-TPO human	quantitative determination of antibodies against thyroid peroxidase (TPO Ab) in human serum [tubes coated with anti-TPO / tracer (125-iodine-hTPO)]	100 (92 + C) 120 min / 10 µL
2085	SELco® anti-Tg human	quantitative determination of antibodies against thyroglobulin (Tg Ab) in human serum [tubes coated with anti-hTg / tracer (125-iodine-hTg)]	100 (92 + C) 120 min / 100 µL

IFA

Manual Assays



Dermatology

REF	PRODUCT	DESCRIPTION	DETERMINATIONS
86148	ASA IFA	determination of IgG antibodies against skin antigens (ASA) in human serum [slides with monkey tissue sections (esophagus)]	48 (12 x 4) 60 min

Gastroenterology

REF	PRODUCT	DESCRIPTION	DETERMINATIONS
8064	CytoBead® CeliAK	determination of IgA or IgG antibodies against endomysium (EmA), transglutaminase 2 and deamidated gliadin as well for the control of total IgA antibodies in human serum [slides with monkey tissue sections (esophagus) and beads coated with tTG, deamidated gliadin and anti-IgA]	48 (6 x 8) 60 min
85848	ICA IFA	determination of IgG antibodies against islet cells (ICA) in human serum [slides with monkey tissue sections (pancreas)]	48 (12 x 4) 60 min
86048	EmA IFA	determination of IgA antibodies against endomysium (EmA) in human serum [slides with monkey tissue sections (esophagus)]	48 (12 x 4) 60 min
86096	EmA IFA	determination of IgA antibodies against endomysium (EmA) in human serum [slides with monkey tissue sections (esophagus)]	96 (12 x 8) 60 min

Hepatology

REF	PRODUCT	DESCRIPTION	DETERMINATIONS
83048	AMA IFA	determination of anti-mitochondrial antibodies (AMA) in human serum [slides with rat tissue sections (kidney)]	48 (12 x 4) 60 min
84048	ASMA IFA	determination of antibodies to the smooth muscle (ASMA) in human serum [slides with rat tissue sections (stomach)]	48 (12 x 4) 60 min
85048	Triple IFA	determination of IgG antibodies in human serum [slides with rat tissue sections (liver / stomach / kidney)]	48 (12 x 4) 60 min
85096	Triple IFA	determination of IgG antibodies in human serum [slides with rat tissue sections (liver / stomach / kidney)]	96 (12 x 8) 60 min

Neurology

REF	PRODUCT	DESCRIPTION	DETERMINATIONS
8049	Anti-MuSK IFA	determination of antibodies against muscle specific tyrosine kinase (MuSK) [slides with transfected (HEp-2 MuSK) and untransfected (HEp-2) cells]	60 (10 x 6) 60 min

Rheumatology

Connective Tissue Diseases

REF	PRODUCT	DESCRIPTION	DETERMINATIONS
8065	CytoBead® ANA	determination of IgG antibodies against nuclear and cytoplasmic antigens in human serum [slides with HEp-2 cells and beads coated with dsDNA, Scl-70, SS-A/Ro60, SS-A/Ro52, SS-B, CENP-B, Sm, Sm/RNP]	80 (10 x 8) 60 min
8220	CytoBead® ANA 2	determination of IgG antibodies against nuclear and cytoplasmic antigens in human serum [slides with HEp-2 cells and beads coated with dsDNA, Scl-70, SS-A/ Ro60, SS-A/Ro52, SS-B, Jo-1, Sm, Sm/RNP]	80 (10 x 8) 60 min
8101	ANA HEp-2 plus	determination of IgG antibodies against nuclear and cytoplasmic antigens in human serum [slides with HEp-2 cells]	120 (10 x 12) 60 min
81040	ANA HEp-2 plus	determination of IgG antibodies against nuclear and cytoplasmic antigens in human serum [slides with HEp-2 cells]	480 (40 x 12) 60 min

Systemic Lupus Erythematosus

REF	PRODUCT	DESCRIPTION	DETERMINATIONS
81050	nDNA IFA plus	determination of IgG antibodies against native DNA in human serum [slides with <i>Crithidia luciliae</i> cells]	60 (10 x 6) 60 min
81100	nDNA IFA plus	determination of IgG antibodies against native DNA in human serum [slides with <i>Crithidia luciliae</i> cells]	120 (10 x 12) 60 min

Vasculitis

REF	PRODUCT	DESCRIPTION	DETERMINATIONS
8063	CytoBead® ANCA	determination of IgG antibodies against neutrophil cytoplasmic antigens (ANCA) and glomerular basement membrane (GBM) in human serum [slides with human granulocytes (ethanol fixed) and beads coated with PR3, MPO and GBM]	48 (6 x 8) 60 min
86448	Anti-GBM IFA	determination of IgG antibodies against the glomerular basal membrane (GBM) in human serum [slides with monkey tissue sections (kidney)]	48 (12 x 4) 60 min
87061	cANCA IFA plus	determination of IgG antibodies against neutrophil cytoplasmic antigens (ANCA) in human serum [slides with human granulocytes, ethanol fixed]	60 (10 x 6) 60 min
87161	pANCA IFA plus	determination of IgG antibodies against neutrophil cytoplasmic antigens (ANCA) in human serum [slides with human granulocytes, formalin fixed]	60 (10 x 6) 60 min
87261	ANCA IFA dual	determination of IgG antibodies against neutrophil cytoplasmic antigens (ANCA) in human serum [slides with human granulocytes, ethanol fixed as well as formalin fixed]	120 (10 x 12) 60 min

Automated Assays



Dermatology

REF	PRODUCT	DESCRIPTION	DETERMINATIONS
4125	AKLIDES® ASA	determination of IgG antibodies against skin antigens (ASA) in human serum [slides with monkey tissue sections (esophagus)]	48 (12 x 4) 60 min

Gastroenterology

REF	PRODUCT	DESCRIPTION	DETERMINATIONS
4129	AKLIDES® ICA	determination of IgG antibodies against islet cells (ICA) in human serum [slides with monkey tissue sections (pancreas)]	48 (12 x 4) 60 min
4131	AKLIDES® EmA	determination of IgA antibodies against endomysium (EmA) in human serum [slides with monkey tissue sections (esophagus)]	48 (12 x 4) 60 min
4132	AKLIDES® EmA	determination of IgA antibodies against endomysium (EmA) in human serum [slides with monkey tissue sections (esophagus)]	96 (12 x 8) 60 min
4271	AKLIDES® Cytobead® CeliAK	determination of IgA or IgG antibodies against endomysium (EmA), transglutaminase 2 and deamidated gliadin as well for the control of total IgA antibodies in human serum [slides with monkey tissue sections (esophagus) and beads coated with tTG, deamidated gliadin and anti-IgA]	48 (6 x 8) 60 min

Hepatology

REF	PRODUCT	DESCRIPTION	DETERMINATIONS
4117	AKLIDES® AMA	determination of anti-mitochondrial antibodies (AMA) in human serum [slides with rat tissue sections (kidney)]	48 (12 x 4) 60 min
4119	AKLIDES® ASMA	determination of IgG antibodies against the smooth muscle (ASMA) in human serum [slides with rat tissue sections (stomach)]	48 (12 x 4) 60 min
4121	AKLIDES® Triple	determination of IgG antibodies in human serum [slides with rat tissue sections (liver / stomach / kidney)]	48 (12 x 4) 60 min
4122	AKLIDES® Triple	determination of IgG antibodies in human serum [slides with rat tissue sections (liver / stomach / kidney)]	96 (12 x 8) 60 min

Nephrology

REF	PRODUCT	DESCRIPTION	DETERMINATIONS
4123	AKLIDES® Anti-GBM	determination of IgG antibodies against the glomerular basement membrane (GBM) in human serum [slides with monkey tissue sections (kidney)]	48 (12 x 4) 60 min

Rheumatology

Connective Tissue Diseases

REF	PRODUCT	DESCRIPTION	DETERMINATIONS
4065	AKLIDES® ANA plus	determination of IgG antibodies against nuclear (ANA) and cytoplasmic antigens in human serum [slides with HEp-2 cells]	120 (10 x 12) 60 min
4063	AKLIDES® ANA plus	determination of IgG antibodies against nuclear (ANA) and cytoplasmic antigens in human serum [slides with HEp-2 cells]	480 (40 x 12) 60 min
4272	AKLIDES® CytoBead® ANA	determination of IgG antibodies against nuclear and cytoplasmic antigens in human serum [slides with HEp-2 cells and beads coated with dsDNA, Scl-70, SS-A/Ro60, SS-A/Ro52, SS-B, CENP-B, Sm, Sm/RNP]	80 (10 x 8) 60 min
4277	AKLIDES® CytoBead® ANA 2	determination of IgG antibodies against nuclear and cytoplasmic antigens in human serum [slides with HEp-2 cells and beads coated with dsDNA, Scl-70, SS-A/Ro60, SS-A/Ro52, SS-B, Jo-1, Sm, Sm/RNP]	80 (10 x 8) 60 min

Systemic Lupus Erythematosus

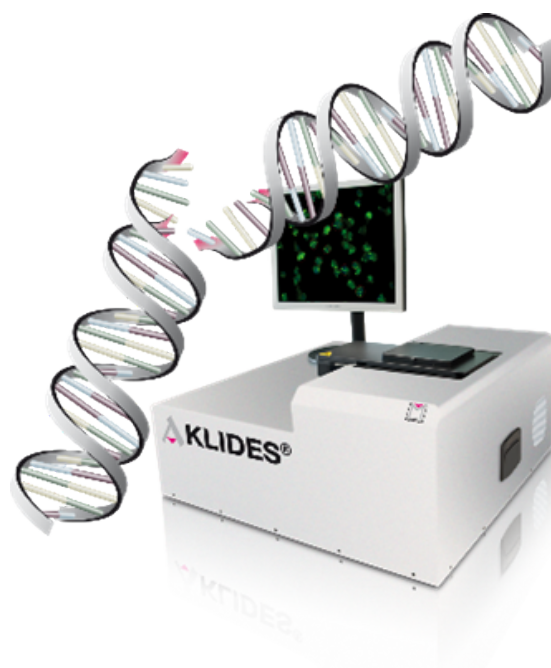
REF	PRODUCT	DESCRIPTION	DETERMINATIONS
4282	AKLIDES® nDNA	determination of IgG antibodies against native DNA in human serum [slides with <i>Crithidia lucilliae</i> cells]	60 (10 x 6) 60 min
4283	AKLIDES® nDNA	determination of IgG antibodies against native DNA in human serum [slides with <i>Crithidia lucilliae</i> cells]	120 (10 x 12) 60 min

Vasculitis

REF	PRODUCT	DESCRIPTION	DETERMINATIONS
4060	AKLIDES® cANCA	determination of IgG antibodies against neutrophil cytoplasmic antigens (ANCA) in human serum [slides with human granulocytes, ethanol fixed]	60 (10 x 6) 60 min
4072	AKLIDES® pANCA	determination of IgG antibodies against neutrophil cytoplasmic antigens (ANCA) in human serum [slides with human granulocytes, formalin fixed]	60 (10 x 6) 60 min
4472	AKLIDES® ANCA dual	determination of IgG antibodies against neutrophil cytoplasmic antigens (ANCA) in human serum [slides with human granulocytes, ethanol fixed as well as formalin fixed]	120 (10 x 12) 60 min
4270	AKLIDES® CytoBead® ANCA	determination of IgG antibodies against neutrophil cytoplasmic antigens (ANCA) and glomerular basement membrane (GBM) in human serum [slides with human granulocytes (ethanol fixed) and beads coated with PR3, MPO and GBM]	48 (6 x 8) 60 min

Automated Assays

For research use only



AKLIDES® Cell Damage

REF	PRODUCT	DESCRIPTION	DETERMINATIONS
4162	AKLIDES® Nuk Human Lymphocyte Complete HLC	quantitative staining and determination of γ -H2AX in lymphocytes derived from whole blood	60 (10 x 6) 310 min / 12 mL
4268	AKLIDES® Nuk Human Lymphocyte Complete Combi HLCC	quantitative staining and determination of γ -H2AX and 53BP1 in lymphocytes derived from whole blood	60 (10 x 6) 310 min / 12 mL
4278	AKLIDES® Nuk Human Lymphocyte Isolation HLI	Lymphocyte isolation from whole blood	60 (10 x 6) 95 min / 6mL
4362	AKLIDES® Nuk Capillary Blood Human Lymphocyte CBHL	quantitative staining and determination of γ -H2AX and 53BP1 in lymphocytes from capillary blood	30 (5 x 6)

Rapid Tests

Lateral Flow



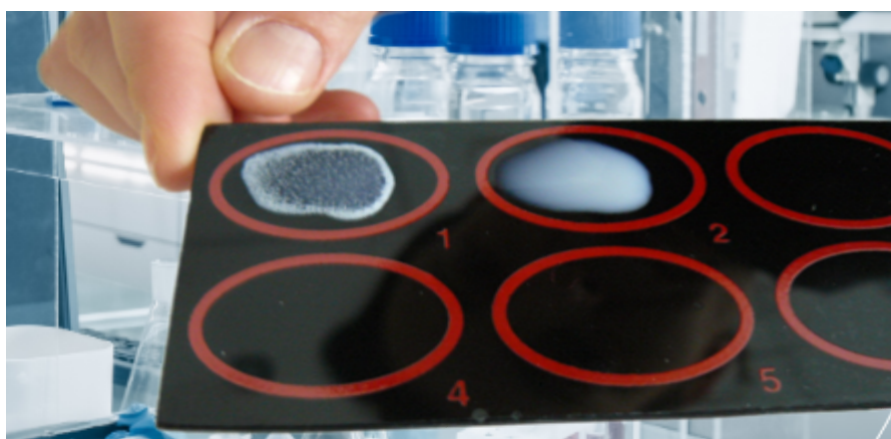
Infectiology

REF	PRODUCT	DESCRIPTION	DETERMINATIONS
6103	Rotadeno Antigen Quick	determination of rotavirus and adenovirus antigen in fecal samples [Test strip with anti-rotavirus and anti-adenovirus antibodies]	25 10 min
6109	Influenza Antigen Quick	detection of influenza virus type A and type B antigen in nasal and nasopharyngeal specimens (swab, wash and aspirate) [Test strip with anti-influenza A and anti-influenza B virus antibodies]	25 10 min

Gastroenterology

REF	PRODUCT	DESCRIPTION	DETERMINATIONS
6110	Helicobacter Antigen Quick	qualitative determination of <i>Helicobacter pylori</i> antigen in fecal samples [Test strip with anti- <i>Helicobacter pylori</i> antibodies]	25 5 min
6118	Calprotectin Rapid	detection of human calprotectin in stool samples [Test cassettes coated with anti-calprotectin antibodies]	1 10 min
6119	Calprotectin Rapid	detection of human calprotectin in stool samples [Test cassettes coated with anti-calprotectin antibodies]	10 10 min

Latex Tests



REF	PRODUCT	DESCRIPTION	DETERMINATIONS
3021	D-Dimer Latex	detection of circulating derivatives of cross-linked fibrin degradation products (XL-FDP) in human plasma [Latex particles coated with anti-D-Dimer antibodies]	50 3 min / 20 µL
3321	D-Dimer Latex	detection of circulating derivatives of cross-linked fibrin degradation products (XL-FDP) in human plasma [Latex particles coated with anti-D-Dimer antibodies]	100 3 min / 20 µL
4095	CRP Latex	detection of C-reactive protein (CRP) in human serum [Latex particles coated with anti-CRP]	100 2 min / 40 µL
4096	RF Latex	detection of rheumatoid factor (RF) in human serum [Latex particles coated with human IgG]	100 2 min / 40 µL

IFA Platform Technology

Application – Immunology



akiron® NEO

DEVICE REF	4450
Indication	Autoimmune diseases
Description	Fully automated system for standardized immunofluorescence imaging and data processing
Size / Weight	32 cm x 28 cm x 46 cm (L x W x H) / 15 kg
Illumination	3 wavelengths LED
Objectives	Motorized fluorescence microscope with 20x objective
Filter sets	blue / green / red
Slide amount	Motorized x-y stage for 2 slides
Analysis	Pattern, intensity, end-point-titre, cell & tissue imaging
Parameters	ANA, ANCA, CytoBead®, Tissue
Report	Overall report & single report, documentation, archival storage
Connectivity	Pipettor and LIS

Pipettor

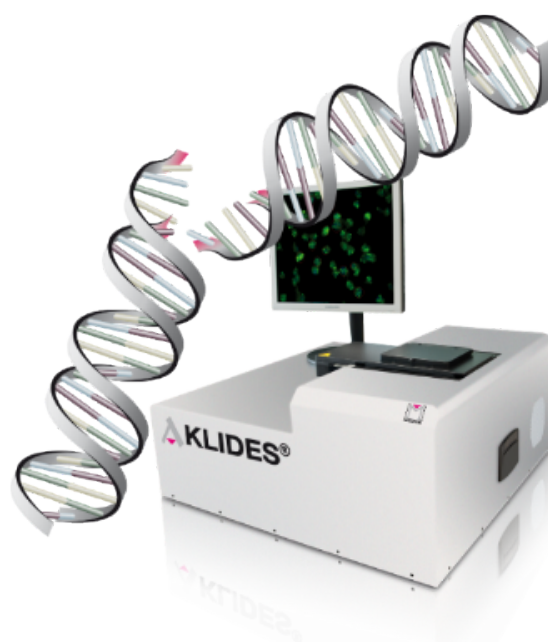


AP16 IF ELITE

DEVICE REF	4370
Indication	IFA Diagnostics
Description	Fully automated IFA Processor for AKLIDES® and akiron® systems
Size / Weight	62 cm x 82 cm x 72 cm (W x D x H) / 75 kg
Slide capacity	16
Sample capacity	160
Barcode reader	1D and 2D
Dilution positions	264
Parameters	ANA, ANCA, nDNA, CytoBead®, Tissue
Method	Method capacity up to 8 methods in parallel
Connectivity	akiron®NEO and LIS

Application Cell Damage

For research use only



AKLIDES[®] Cell Damage

DEVICE REF	3886
Indication	DNA double strand breaks Oncology Stress study
Description	Standardized and automatic determination of DNA double strand breaks using immunofluorescence
Size / Weight	65 cm x 67 cm x 32 cm (L x W x H) / 78 kg
Illumination	4 wavelengths LED
Objectives	4 different objectives
Filter sets	blue / green / orange / red
Slide amount	Motorized x-y stage for 5 slides
Analysis	Image acquisition
Parameters	Cell damage
Report	Overall report & single report, documentation, archival storage
Connectivity	LIS

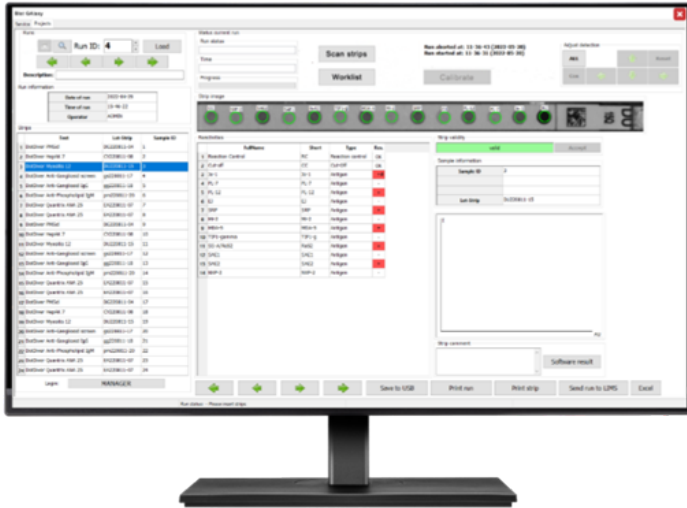
Blot Automation



DotDiver2.0

DEVICE REF	5075
Indication	Systemic inflammatory rheumatic diseases, gastroenterology, neuropathies, anti-phospholipid syndrome, vasculitis, nephritis, myositis, scleroderma, autoimmune hepatitis
Description	Compact, integrated system for automated LINE/Dot immunoassays
Size / Weight	34 x 42 x 36.5 cm (L x W x H) / 15 kg
Format	Antigen coated strips Ready to use reagent cartridges
Sample capacity	1 - 24 samples
Assay time	Assay dependent
Parameters	Assay depending antigen coated strips & ready to use reagent cartridges
Report	Standardized PDF Print out in full & single reports
Connectivity	LIS

Blot Scanning Software



Blot GALaxy

DEVICE REF	5100
Indication	Systemic inflammatory rheumatic diseases, gastroenterology, neuropathies, anti-phospholipid syndrome, vasculitis, nephritis, myositis, scleroderma, autoimmune hepatitis
Description	Evaluation software for LINE/Dot immunoassays
Sample capacity	1 - 24 samples
Parameters	Assay depending antigen coated strips
Report	Standardized PDF Print out in full & single reports
Connectivity	LIS

Index

ABC	REF	Product Name	Page
A	4450	akiron® NEO	26
	4117	AKLIDES® AMA	21
	4063	AKLIDES® ANA plus	21
	4065	AKLIDES® ANA plus	21
	4472	AKLIDES® ANCA dual	22
	4123	AKLIDES® Anti-GBM	21
	4125	AKLIDES® ASA	20
	4119	AKLIDES® ASMA	21
	4060	AKLIDES® cANCA	22
	3886	AKLIDES® Cell Damage	23/28
	4272	AKLIDES® CytoBead® ANA	21
	4277	AKLIDES® CytoBead® ANA 2	21
	4270	AKLIDES® CytoBead® ANCA	22
	4271	AKLIDES® CytoBead® CeliAK	20
	4131	AKLIDES® EmA	20
	4132	AKLIDES® EmA	20
	4129	AKLIDES® ICA	20
	4282	AKLIDES® nDNA	22
	4283	AKLIDES® nDNA	22
	4362	AKLIDES® Nuk Capillary Blood Human Lymphocyte CBHL	23
	4268	AKLIDES® Nuk Human Lymphocyte Complete Combi HLCC	23
	4162	AKLIDES® Nuk Human Lymphocyte Complete HLC	23
	4278	AKLIDES® Nuk Human Lymphocyte Isolation HLI	23
	4072	AKLIDES® pANCA	22
	4121	AKLIDES® Triple	21
	4122	AKLIDES® Triple	21
	83048	AMA IFA	18
	4289	ANA 12 LINE	14
	4291	ANA 18 LINE	14
	8101	ANA HEp-2 plus	18
	81040	ANA HEp-2 plus	18
	4012	ANApr	8
	4074	ANAscl ^{plus} Dot	14
	4010	ANAscreen	9
	5032	ANAscreen quant	9
	4028	ANCA Dot	14
	87261	ANCA IFA dual	19
	4041	Anti-β2-GP-I	8
	4036	Anti-β2-GP-I Screen	8
	3900	Anti-ASGPR	8

ABC	REF	Product Name	Page
	4016	Anti-Cardiolipin	8
	4014	Anti-Cardiolipin Screen	8
	3665	Anti-CCP	9
	4015	Anti-dsDNA	9
	4067	Anti-Faktor H	8
	5003	Anti-Gangliosid Dot	13
	86448	Anti-GBM IFA	19
	3750	Anti-GP2 IgA	7
	3850	Anti-GP2 IgG	7
	3610	Anti-GPC	7
	4044	Anti-hu tTG IgG	7
	4033	Anti-huTransG	7
	3600	Anti-Intrinsic Factor	7
	4053	Anti-LKM-1	8
	4052	Anti-M2	8
	4058	Anti-MPO	9
	8049	Anti-MuSK IFA	18
	4056	Anti-Phosphatidyl-Serin	8
	5012	Anti-Phospholipid 10 Dot	14
	4050	Anti-Phospholipid screen	8
	4259	Anti-PR3 hs	9
	4370	AP16 IF ELITE	27
	86148	ASA IFA	17
	4006	ASCA IgA	7
	4007	ASCA IgG	7
	84048	ASMA IFA	18
B	4220	BiermAK LINE	13
	5100	Blot Galaxy	30
C	6118	Calprotectin Rapid	24
	6119	Calprotectin Rapid	24
	87061	cANCA IFA plus	19
	4208	CeliAK IgA LINE	13
	4202	CeliAK IgG LINE	13
	2070	CentAK® anti-GAD ₆₅ M	16
	2071	CentAK® anti-GAD ₆₅ M	16
	2050	CentAK® anti-IA2 M	16
	2150	CentAK® anti-IA2 M	16
	2035	CentAK® anti-IAA M	16
	4095	CRP Latex	25
	8065	CytoBead® ANA	18
	8220	CytoBead® ANA 2	18
	8063	CytoBead® ANCA	19
	8064	CytoBead® CeliAK	17

ABC	REF	Product Name	Page	
D	3021	D-Dimer Latex	25	
	3321	D-Dimer Latex	25	
	5075	DotDiver2.0	29	
	5016	DotDiver ANA	11	
	5291	DotDiver ANA 18	12	
	5035	DotDiver ANA PCNA	11	
	5066	DotDiver ANAcyto 10	12	
	5018	DotDiver ANCA	12	
	50381	DotDiver Anti-Gangliosid IgG	11	
	50391	DotDiver Anti-Gangliosid IgM	11	
	50301	DotDiver Anti-Gangliosid screen	11	
	50401	DotDiver Anti-Phospholipid IgG	11	
	50411	DotDiver Anti-Phospholipid IgM	11	
	5019	DotDiver BiermAK	10	
	5014	DotDiver CeliAK IgA	10	
	5015	DotDiver CeliAK IgG	10	
	5070	DotDiver HepAK 10	10	
	5021	DotDiver HepAK 7 plus	10	
	5093	DotDiver Myositis 12	12	
	5017	DotDiver PmScl	11	
	5045	DotDiver PmScl 12	12	
	5020	DotDiver Quantrix ANA	11	
	5069	DotDiver Scleroderma 10	12	
	E	86048	EmA IFA	17
		86096	EmA IFA	17
	G	3710	GliaDea IgA	7
		3810	GliaDea IgG	7
H	6110	Helicobacter Antigen Quick	24	
	6012	Helicobacter pylori Antigen	7	
	6013	Helicobacter pylori Antigen	7	
	4099	HepAK 7 ^{plus} Dot	13	
	4030	HepAK ^{plus} Dot	13	
I	85848	ICA IFA	17	
	6109	Influenza Antigen Quick	24	
M	3507	Medizym® anti-GAD M	6	
	3506	Medizym® anti-IA2 M	6	
	3102	Medizym® anti-Tg	6	
	3002	Medizym® anti-TPO	6	
	3806	Medizym® IAA	6	
	3505	Medizym® T.R.A. human	6	
N	81050	nDNA IFA plus	19	
	81100	nDNA IFA plus	19	
P	87161	pANCA IFA plus	19	
	3950	Pancreatitis GP2	7	

ABC	REF	Product Name	Page
	4049	PmScI ^{plus} Dot	14
R	4027	RF IgA	9
	4085	RF IgG	9
	4046	RF IgM	9
	4096	RF Latex	25
	6103	Rotadeno Antigen Quick	24
S	2085	SELco [®] anti-Tg human	16
	2080	SELco [®] anti-TPO human	16
	1630	SELco [®] Calcitonin	15
	1652	SELco [®] FT3	15
	1881	SELco [®] FT4	15
	1301	SELco [®] Tg 1 step	15
	2042	SELco [®] TRAb human 1 step	15
	1450	SELco [®] TSH rapid	15
T	85048	Triple IFA	15
	85096	Triple IFA	18



Medipan GmbH



GA Generic Assays GmbH

Ludwig-Erhard-Ring 3
15827 Blankenfelde-Mahlow OT Dahlewitz
GERMANY

+49 33708 4417 - 0

+49 33708 9286 - 0

+49 33708 4417 - 25

+49 33708 4417 - 25

info@medipan.de

info@genericassays.com

www.medipan.de

www.genericassays.com

Follow us on Social Media



Product Catalogue / Version 023/06.2024